

**FX 2300-EXT-IX**

ECONOMIC VERSION SHORT VERSION SIDE SEAM AUTOMAT



**HEAD OFFICE**

Basin Expres Yolu Mehmet Akif Mah. Bahariye Cad. No:105  
34303 K.Çekmece / İSTANBUL / TURKEY  
Tel: +90 212 472 01 01  
Fax: +90 212 612 79 65

**FACTORY**

Konya Ankara Yolu. Havaalanı Kavşağı  
No: 213  
42100 Selçuklu / KONYA  
Tel: +90 332 358 01 01  
Fax: +90 332 358 09 00



## FX 2300 - EXT - IX

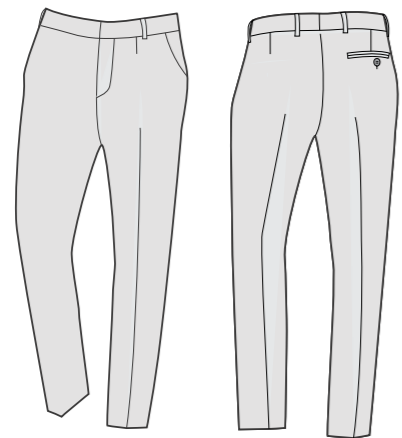
ECONOMIC VERSION SHORT VERSION SIDE SEAM AUTOMAT



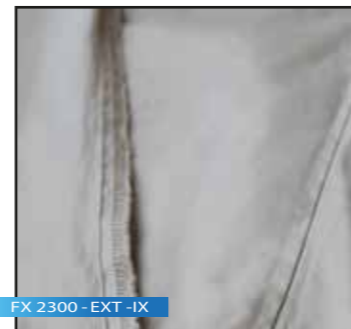
5 Thread Safetystitch



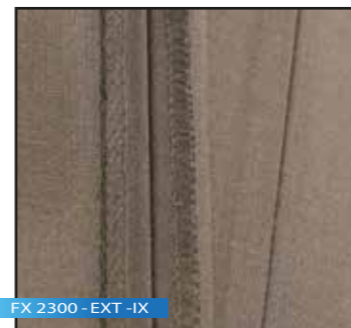
Overedg Stitch



FX 2300 - EXT -IX



FX 2300 - EXT -IX



FX 2300 - EXT -IX



FX 2300 - EXT -IX

Max. Sewing Speeds : 6.000 r.p.m  
Max. Stitch Length : 1 or 3,8 mm  
Connection Voltage: Single-Phase A.C. 230 V, 50/60 Hz  
Air Pressure : 6 bar

## FX 2300 - EXT - IX

ECONOMIC VERSION SHORT VERSION SIDE SEAM AUTOMAT

The sewing unit FX 2300-EXT-IX is the **economy version** for sewing side seams and inseams. The compact design is especially suitable for the universal use in the production of sportswear trousers. Due to the pneumatically moveable edge guide it is possible to trim the excess lengths of pocket bags.

With edge guide pneumatically moveable edge guide (Zippy).  
For trimming the extra lengths of pocket bags in sportswear trousers.

### TECHNICAL SPECIFICATIONS

Sewing head: Pegasus EXT 3216-03  
Integrated Efka 550 W Mini Stop DC Servo Sewing Motor  
Short table, Machine frame with adjustable height providing the possibility of working from the front  
Guide attachment for contours (Zippy)  
Vertical cutter with suction device  
Chain separator with suction device  
PLC Control Unit  
Thread cutting and suction at stitch beginning and end  
Air blowing units over the counter provides the easy flow of fabric to the back  
Constant seam width due to precise contour guidance (Zippy)  
Closing and serging can be executed in one operation  
Blowing nozzles in the table top for facilitating the material feed  
Yarn waste compartment

### OPTIONS

- Universal Stacking
- Pneumatic fabric holding piston guiding the work flow to the stacker
- Beijer , Windows Based 256 Million Colour Supported Touch screen with colour graphic display for easy operation and quick access to modifiable parameters

### PERFORMANCE

480. min. approximately 1.400 pieces side edge or edge between legs

### DIMENSIONS

Length : 85 cm

Width : 105 cm

Height : 120 cm

Packing Size : 127 cm x 89 cm x 145 cm

Machine Net Weight : approx. 110 kg

Machine Gross Weight : approx. 135 kg