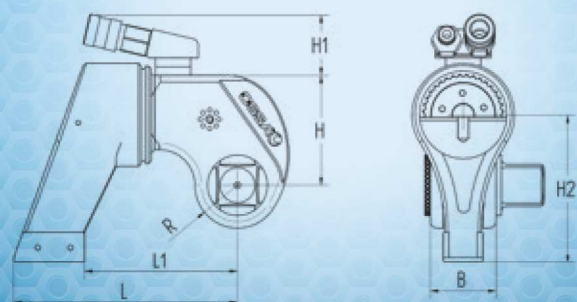
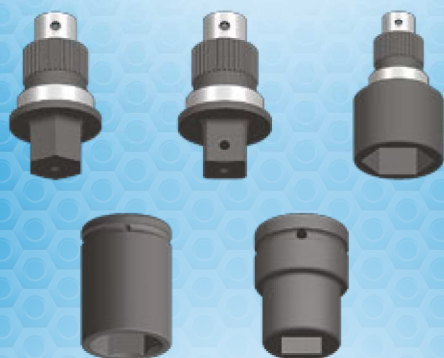




BOLTING TECHNOLOGY

**KHN**



# HYDRAULIC SQUARE DRIVE TORQUE WRENCH KHN series

For tightening and loosening bolts and nuts with use of standardized hex sockets and special insert bits

## APPLICATION AREA:

For all industrial sectors and all kind screw connections.

lightweight – reliable – durable  
compact design – safe

- movable (360°) hydraulic connection for two hoses
- no-spill, fast couplers
- small radius of the wrench head
- reaction arm fitted for all application
- wide variety of sockets and insert bits
- high accuracy and repeatability  $\pm 3\%$
- maximum working pressure 800 bar
- driven by means of a three-stage hydraulic power pack supplied with voltage of 230 VAC or with compressed air

## TECHNICAL DATA

TYPE		KHN 20	KHN 45	KHN 55 W*	KHN 80	KHN 110	KHN 170	KHN 270
Square drive		3/4" -1"	1"	1"-1 1/2"	1 1/2"	1 1/2"	1 1/2"-2 1/2"	2 1/2"
Maximum torque	Nm	2 000	4 500	5 500	8 000	11 000	17 000	27 000
Weight	kg	2,9	5,5	8,8	8,8	11,2	16,2	25,8
R	mm	24	34	39	39	42,5	49	57
L	mm	134	173	205	205	228,5	240	285
L <sub>1</sub>	mm	91,5	115	140	140	154,5	165	190
H	mm	67	87,5	100	100	107,5	121	148
H <sub>1</sub>	mm	55	55	55	55	55	55	55
H <sub>2</sub>	mm	90	115	135	135	150	155	185
B	mm	42	50	60	60	66	76	87

W\* - special design for wind power plant

The right to amend technical parameters without a prior notice is reserved.  
Possible customization of technical solutions.